



# Cellars, basins & grease cellars

**EKOTEK NETWORK offers a complete and certified range of concrete waterproof cellars, basins and grease cellars.**

## characteristics

These cellars or basins are plug and play entities, with traditional reinforcement, made from self-compacting concrete. By application of this technique, the walls become very smooth and densified, making the elements perfectly waterproof.

The cover plate is deliverable in 3 types:

- > provided loose
- > fixed, only when supporting in band and locking
- > bendable, optionally provided with manholes

Concerning the floor plate you can choose between a thickness of 12, 15 or 20 cm, the wall is deliverable with a thickness of 12, 16 and 20 cm and the cover plate is available in 12, 15 and 20 cm thickness.

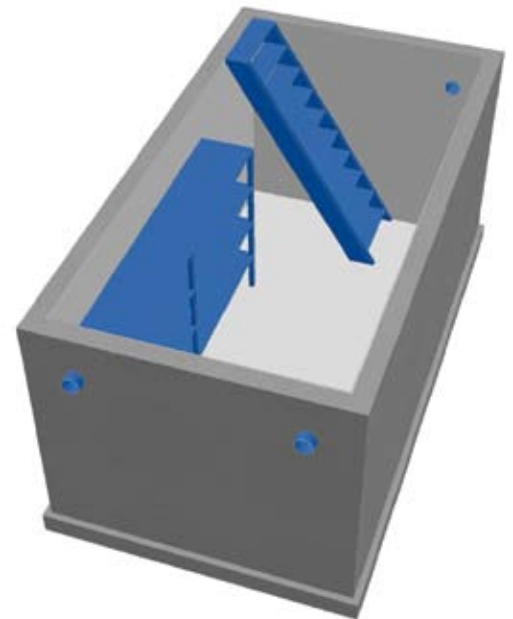
The possibilities for modification are unlimited. The access openings can be foreseen with different dimensions and form. Connections for ventilation or inlet and outlet are all installed during the production at the desired places. Internal walls, the floor and even the internal side of the cover can be foreseen with a liner for protection against chemically aggressive substances.

## cellars and basins

The prefabricated cellars were initially organized in the range of products as house cellar. More and more these rectangular cellars are also used as:

- > water buffering tank
- > enclosure for process technique
- > underground technical area
- > storage and processing of waste water

The cellars and basins are available in contents of 10 m<sup>3</sup> to 60 m<sup>3</sup>.

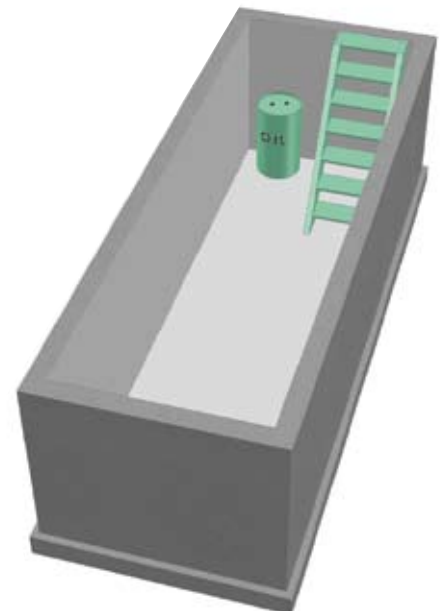


## grease cellars

The prefabricated grease cellars were initially organized in the range of products as cellar for maintenance of cars, freight carriages, forklifts... More and more these rectangular cellars are not only used as grease cellars, but also as:

- > buffering tank for water or silt
- > steaming off area
- > storage and processing of waste water
- > enclosure for process technique

The grease cellars are available in lengths from 2 to 9 m.



**Built in concrete.  
Focused on water.**

The entire EKOTEK NETWORK team is ready to accompany you to find the most appropriate solution. Besides the standardized range of products, a tailor made solution can always be offered.