

Grease traps & sludge traps

EKOTEK NETWORK offers a complete and certified range of waterproof concrete grease traps and sludge traps.

Grease traps and sludge traps are used for the removal of vegetable and animal fats and oils and precipitable substances from waste water. A grease trap device serves for protecting the sewer and to prevent plugging by sedimentation. After all vegetable and animal substances are very corrosive for sewers made of concrete. By combining sludge traps and grease traps, the EKOTEK grease traps ensure that these damages cannot occur.

Grease traps and sludge traps are mostly applied in:

- > kitchens
- > restaurant kitchens
- > care homes
- > hospitals
- > military barracks
- > slaughterhouses
- > meat and fish processing companies
- > vegetable processing companies, etc.

The separators are high quality reinforced monolithically prefabricated concrete traps with a strength class C60/75 meeting the environmental classes XA3 and EA3. Due to the high quality of the applied materials, the EKOTEK traps have a very long lifetime.

**Built in concrete.
Focused on water.**

types

1. Combined grease traps: (0 up to 10 l/sec.)

Very compact grease trap with both grease and sludge trap in one tank. The systems are available in the traffic class B125kN and D400kN and both the CE and KOMO types exist.

2. MAXI grease traps: (10 up to 25 l/sec.)

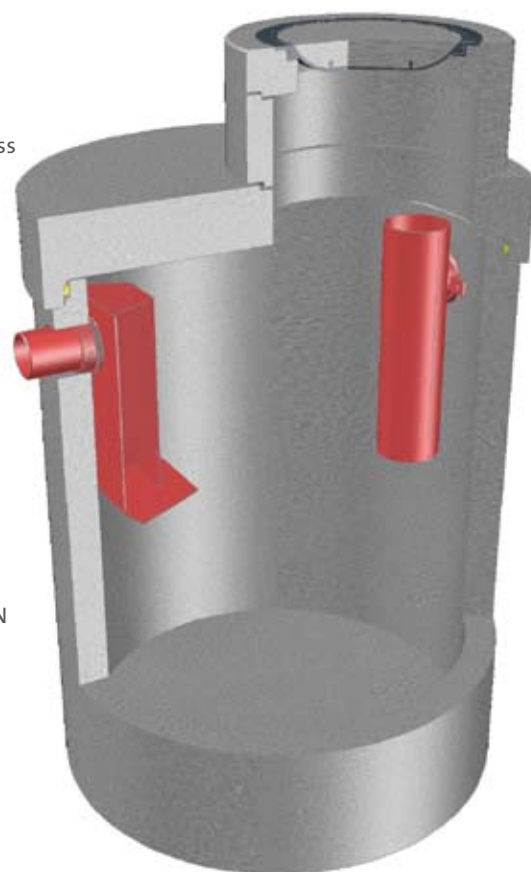
Very compact grease trap with both grease and sludge trap in tank. The systems are available in traffic class B125kN and D400kN and CE marking.

characteristiques

- > Very compact grease trap with CE and/or KOMO marking.
- > High quality reinforced, monolithically prefabricated, waterproof concrete trap, the concrete feed-through openings with flexible SBR seals.
- > Concrete quality class C60/75, environment class XA3 in accordance with NBN EN 206-1: 2001 and environment class EA3 in accordance with NBN B 15-001: 2004.
- > Interior parts with durable HDPE.
- > Muff-cotter connection between trap and cover plate including rubber sealing.
- > Mechanical resistance: traffic load B125 or D400.
- > ON/OFF: HDPE connection flange in accordance with NEN 7008.
- > Calculated and tested in accordance with AND 1825 (<25mg/L)
- > For the KOMO type there is a HDPE lining on the internal wall of 3mm

options

- > inspection trap for each type of separator and in the traffic class B125kN and D400kN
- > maximum grease layer alarm
- > combination alarm of maximum grease layer and backflow
- > made to measure



The entire EKOTEK NETWORK team is ready to accompany you to find the most appropriate solution for your separation problem. Besides the standardized range of products, a tailor made solution can always be offered.